

JIS Flanged Ball Valve

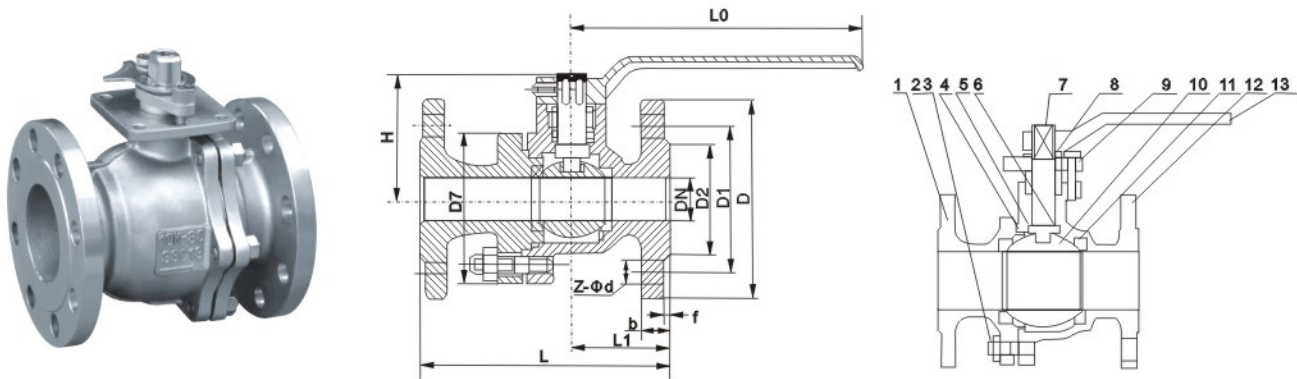


FIG. C-B10K

BS 5351
JIS B1212 B2214
JIS B 2003

Feature

Design standard: BS 5351
Flange standard: JIS B1212 B2214
Test standard: JIS B 2003

Use and specifications

The valve is applied in the pipes with the media such as water, steam and oil with the working temperature less than or equal to 150°C to change the flow direction and connect or cut off the media in pipes

Main Part Material

No	Accessory name	Material		
1	Body	A216WCB	SCS13	SCS13
2	Nuts	A194 2H	A194-8	A194-8
3	Bolts	A193 2B	A193-B8	A193-B8
4	Gasket	PTFE	PTFE	PTFE
5	Thrust Washer	PTFE	PTFE	PTFE
6	Packing	PTFE	PTFE	PTFE
7	Stem	A182-F304	304SS	316SS
8	Lock piece	A36	304SS	316SS
9	Gland Bush	A216-WCB	SCS13	SCS14
10	Ball	A182-F304	304SS	316SS
11	Seat	PTFE	PTFE	PTFE
12	Cover	A216WCB	SCS13	SCS13
13	Lever	WCB	WCB	WCB

Main external and connecting dimensions

Unit:mm

JAPANESE STANDARD10 (K)															
DN		15A	20A	25A	32A	40A	50A	65A	80A	100A	125A	150A	200A	250A	300A
		1/ 2"	3/ 4"	1"	1 1/ 4"	1 1/ 2"	2"	1 1/ 2"	3"	4"	5"	6"	8"	10"	12"
(mm)	L	108	117	127	140	165	178	190	203	229	356	394	457	533	610
	D	95	100	125	135	140	155	175	185	210	250	280	330	400	445
	D1	70	75	90	100	105	120	140	150	175	210	240	290	355	400
	Z-Φd	4x15	4x15	4x19	4x19	4x19	4x19	4x19	4x19	8x19	8x19	8x23	8x23	12x23	12x25